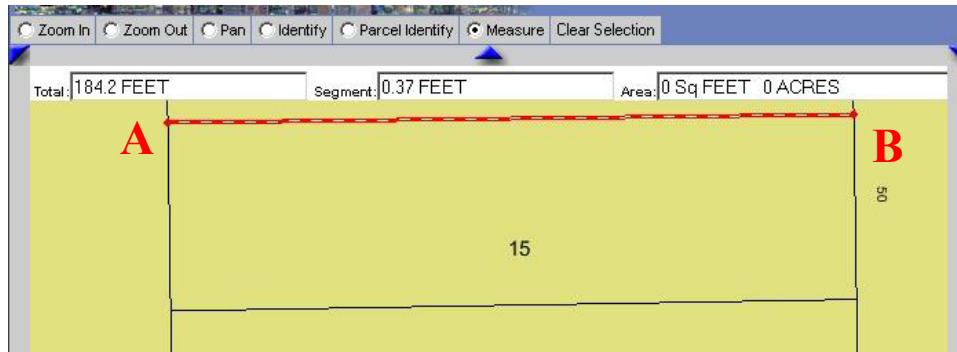
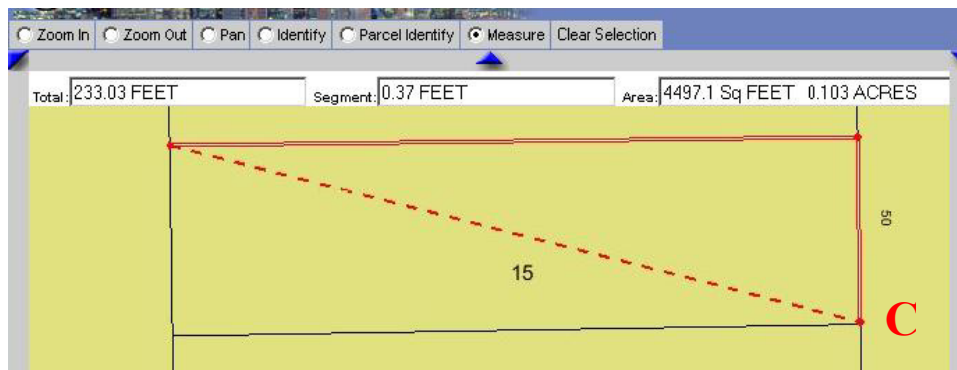


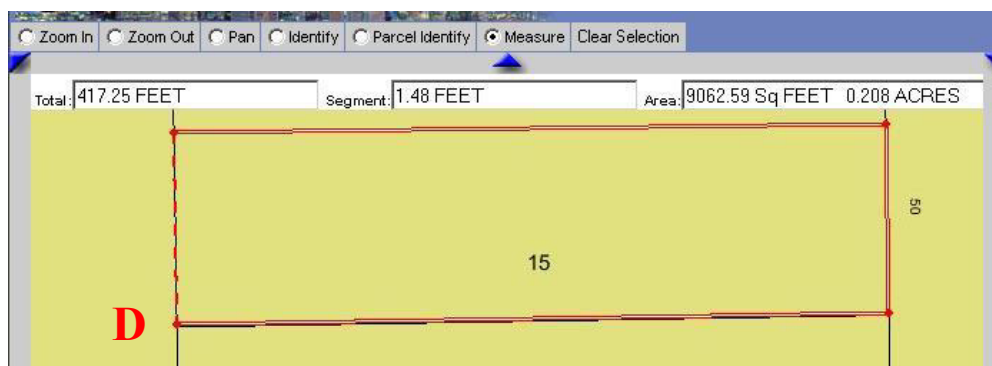
Measure: This allows you to measure the distance from point A to point B and calculate the square feet and acres for that area. With the area of interest in the middle of the display area and **Measure** selected from the 'Tool Selection Box', place the + on the corner (point A) of the parcel and click the left mouse button. Move the mouse over to the next corner (point B) and click the left mouse button again.



To get the square feet and acres, select the next corner, making sure the next selection point is following the parcel lines.



As point C is selected, it creates a polygon and calculates the area as square feet and acres. It is not necessary to end the measurement by clicking on the start point as the measurement will automatically close and complete itself.



Clear Selection: This clears any highlighted selection from 'Search' parcel and the lines from the 'Measure' tool.