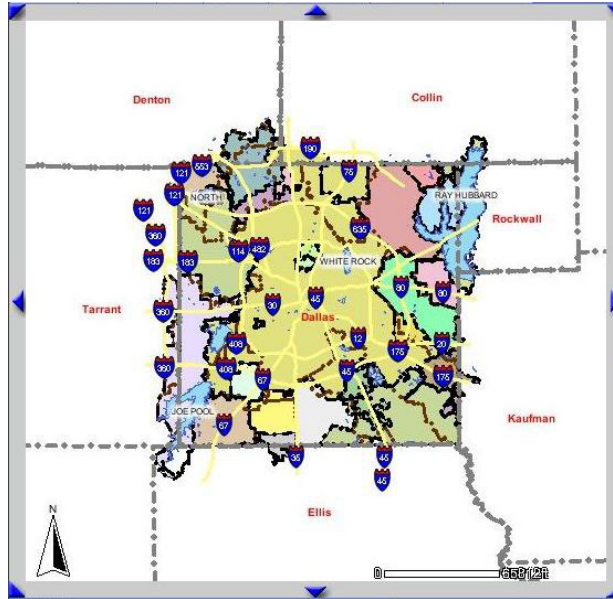


Other DCADMap Tools

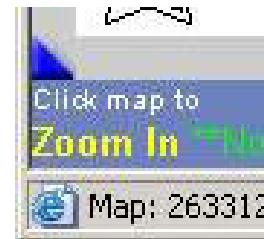
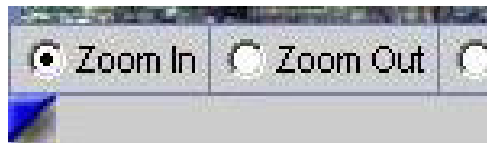
Display Area

This area is where the geographical data is displayed. When the layers are selected to be visible or not visible and the 'Refresh Map' button is clicked, the Display Area will be refreshed with the selections that were made. All the tools in the Tool Selection Box interact with the Display Area.



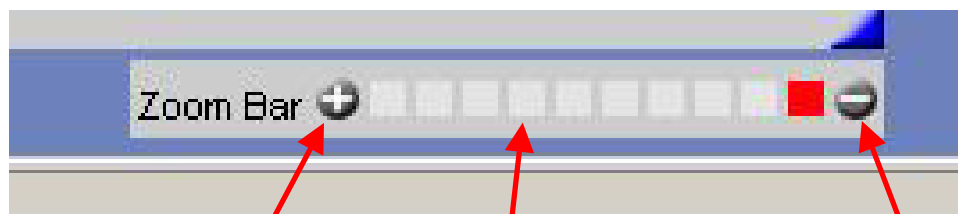
Active Tool Display

This area displays the name of the tool that is selected from the Tool Selection Box.



Zoom Bar

This allows users to Zoom In or Zoom Out to a pre-defined scale.



Select + symbol to Zoom In

Select - symbol to Zoom Out

Click on a box to zoom to a pre-defined scale. By holding the mouse over a box, the scale will be displayed.